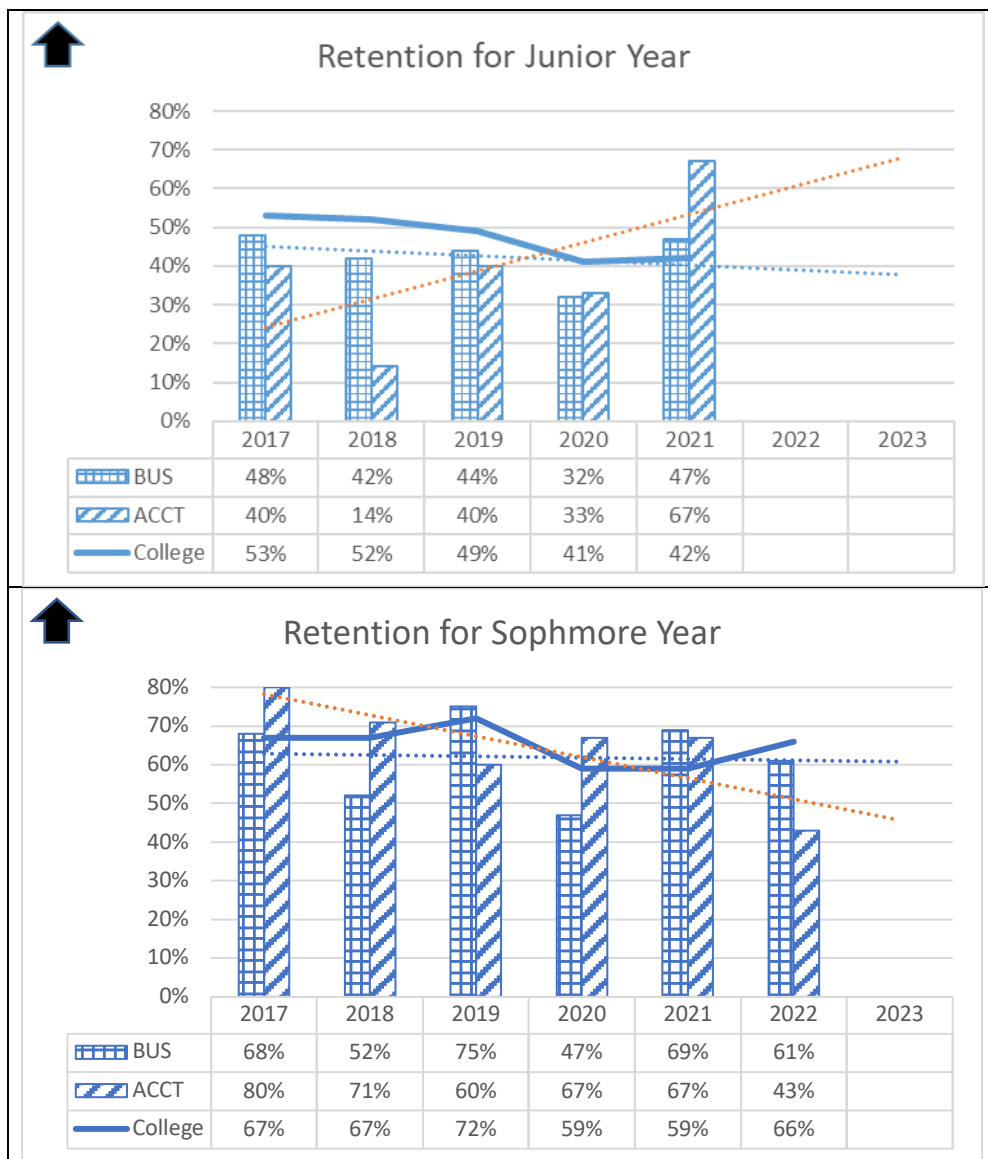


The Council for Higher Education Accreditation requires public reporting on specific student achievements. As these achievement areas are disaggregated to the program level, numerous confounding issues arise, making performance interpretation difficult. Regardless, the Department of Business and Accounting monitors and reacts to these measures to induce improvement actions. Student achievement is graphed below. Please get in touch with the department chair should you have any questions.

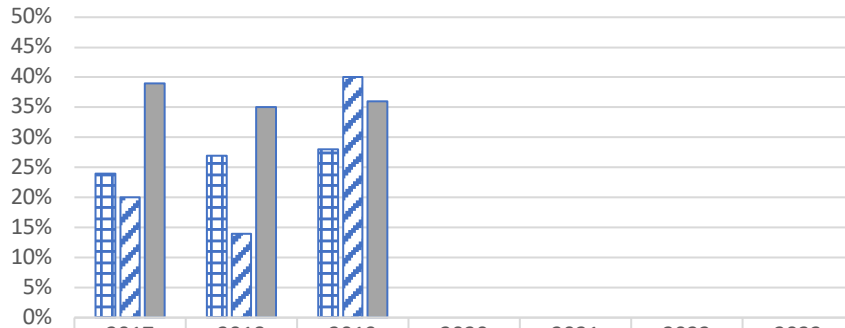
Michael Dutch, Ph.D., MBA

Dutchma@Guilford.edu





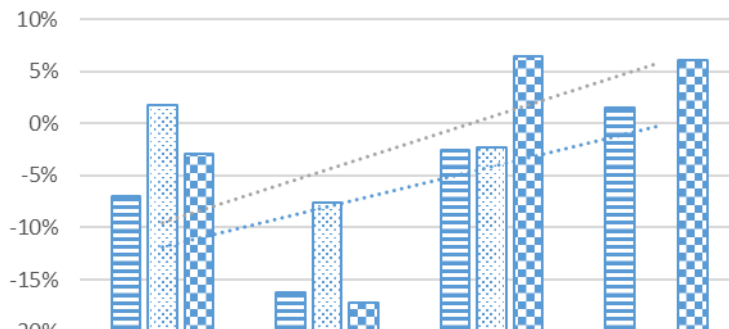
Four Year Graduation Rate



	2017	2018	2019	2020	2021	2022	2023
BUS	24%	27%	28%				
ACCT	20%	14%	40%				
College	39%	35%	36%				



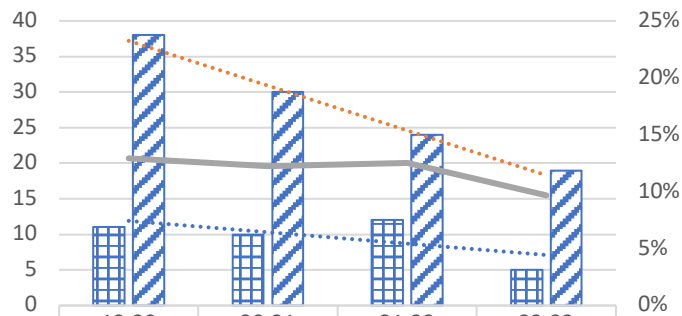
Percent Enrollment Growth Year-Over-Year Fall



	2020	2021	2022	2023
Guilford	-7%	-16%	-3%	1%
Comparative Group	2%	-8%	-2%	
BUSA Undergrad	-3%	-17%	6%	6%



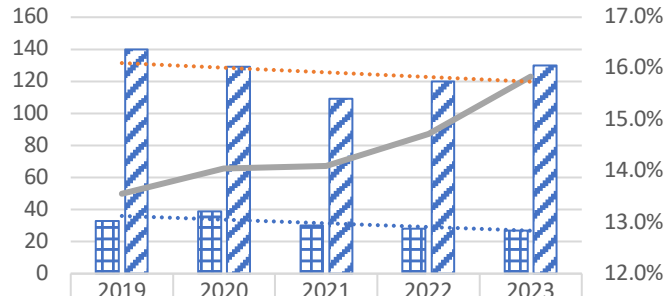
Graduates by Year



	19-20	20-21	21-22	22-23
Accounting	11	10	12	5
Business	38	30	24	19
BUSA as % of College	13%	12%	13%	10%



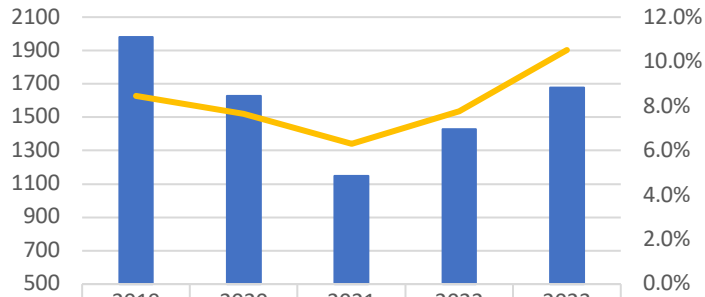
Majors by Year Fall



Accounting	33	39	30	28	27
Business	140	129	109	120	130
BUSA as % of College (excluding Grad and EC)	13.6%	14.0%	14.1%	14.7%	15.8%



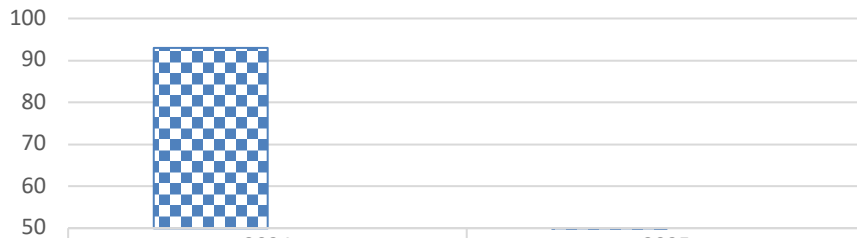
Credit Hour Production Fall



BUSA	1982	1627	1148	1429	1677
BUSA as % of College	8.5%	7.6%	6.3%	7.8%	10.5%



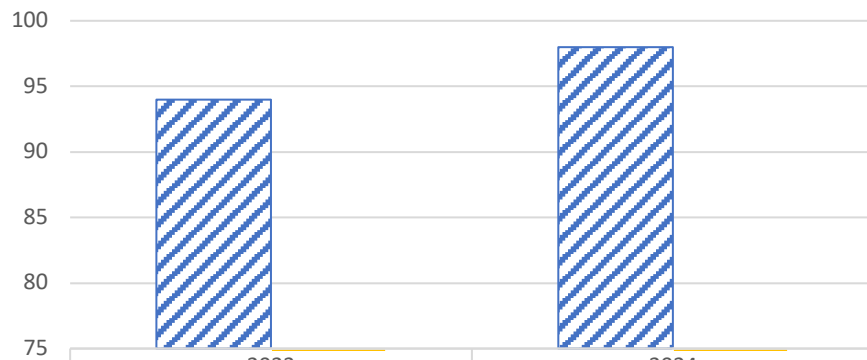
Undergraduate Comprehensive Test Overall ACBSP Percentile Rank



	2024	2025
Total	93	
N	23	

Total N

MBA Comprehensive Test Overall ACBSP Percentile Rank



	2023	2024
Total	94	98
N	16	20